

ROTEXMASTER DETAIL INFORMATION OF WOOD CHIPPER

SHANDONG ROTEX MACHINERY CO.,LTD

ADD:CAOFAN TOWN, ZHANGQIU,JINAN CITY,SHANDONG PROVINCE, CHINA

About Wood Chipper

What is Wood Chipper?

Wood chipper is a equipment used to cut wood (generally tree limbs or trunks) into smaller wood chips.

Application for Wood Chipper?

Widely used in power plants, pellet plants, boiler plants, particle board, fibreboard and paper mills and other industrial production and stock preparation section in wood manufacturing facility, etc.

Raw Material for Wood Chipper?

Wood log, wood branches, waste building template, wood pallets, bamboo...



Technical Parameter of Drum Wood Chipper



Model	Main Power (kw)	Capacity (T/h)	Feeding Hopper Size(L*H) mm	Chips Size (mm)
YMPJ 216	55	3-5	545*230	30-80
YMKJ218	110	6-10	710*360	30-80
YMPJ2113	220/315	15-25	1100*530	30-80
YMPJ1300-300	110	6-10	1300*300	30-80
YMPJ1300-600	160	12-15	1300*600	30-80
YMPJ1400-700	220	15-20	1400*700	30-80

Technical Parameter of Diesel Wood Chipper



Model	Main Power (hp)	Capacity (T/h)	Feeding Hopper Size(L*H)mm	Finished Size (mm)
YMPJ40C	40	1-2	200*200	30
YMPJ 216C	120	3-5	545*230	30
YMPJ218C	220	6-10	710*360	30
YMPJ2113C	550	15-25	1100*530	30

Main Spart Parts of Wood Chipper



Fixed Blades

- 65# manganese steel
- Blade thickness 20mm, thin 1mm per grinding.



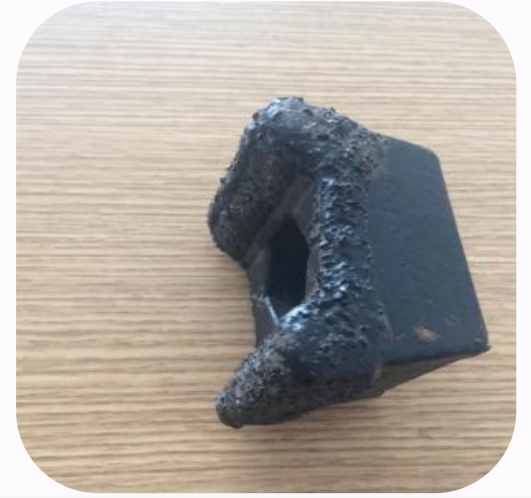
Rotary Blades

- 65# manganese steel ; H13 material



Screen

- Material: Carbon Steel
- Size of Holes:3-8cm



Hammers

- Function:To hit waste wood pallets into small size
- For material with nails

Some Cases about Wood Chipper



220HP Diesel Wood Chipper in Thailand



Diesel Wood Chipper in Japan



220HP Diesel Wood Chipper in Spain



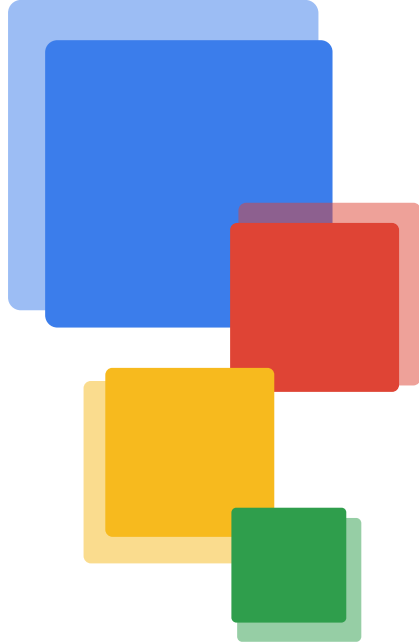
Large Wood Chipper in Thailand



Diesel Wood Chipper in Malaysia



15-25t/h Wood Chipper in South Korean



Contact RotexMaster

Product Expert

Email: sales@rotexmaster.cn

Tel: +86 531 67880768

Web: www.pelletlinesolutions.com